

501 (C) 3 nonprofit organization

The SPOTLIGHT

Contributor Recognition

Recent Contributors

- Duane B., VA
- Fluor Foundation, CA
- Donald & Ann M., TX
- Sharon S., TX
- Alan & Diane B., TX
- Friendship Church, TX
- Cindy M., TX
- Susan C., TX
- James B., Alaska
- Frederick & Shirley S., CA
- Friendswood Chapter No. 1131 Order Of The Eastern Star, TX

In Honor of Rachel Suarez:

- Robert & Sarah F., TX
- John & Carolyn C., TX
- David & Constance B., TX

Volunteer Recognition

Gala Volunteers

- Jane Canseco
- Lori Allen

September Volunteers

- Revae Poole
- Janice Liggett
- Suzanne Slavin
- Sandra Smith
- Bonnie Alcanica
- Jessica Bush
- Jerri Borrer
- Kelli Coy
- Margrette Archer
- Kimberly Stoeck

September Weekend Phone Volunteers:

- Susan Jennings
- Kimberly Stoeck
- Suzanne Slavin

Search Update

22-year-old Camille Cleverley, a Brigham Young University student, was last seen the afternoon of August 30th. After a week of searching, police in Provo, Utah called the LRC on September 7th and asked us to help organize a civilian search for Camille. Dawn Davis, Janice Liggett, and Bob Smither arrived in Provo late on the 7th, and a large-scale search was begun early the next morning. The LRC worked closely with Usearch (a Utah search group that organized after the LRC search for Elizabeth Smart), Klaas Kids search director Brad Dennis, and members of the Destiny Search organization. About 1400 volunteers were able to canvass the area in Provo where Camille was last seen. On September 9th, volunteers continued canvassing and searching along roads in the canyon leading to Bridal Veil Falls. We sadly report that specialized law enforcement teams located Camille's remains at the base of a cliff near Bridal Veil Falls in the afternoon of September 9th.

Upcoming Activities

October

- 5 Gala Fundraiser
- 9 SKATE Program, PTA Armand Bayou Elementary, Clear Lake
- 11 SKATE Program, Walter Matthys Elem., South Houston (2 sessions)
- 16 SKATE Program, The Regis School, Houston
- 17 Child Education, Porter Elem., Porter
- 18 SKATE Program, Cook Elem., Houston (2 sessions)
- 23 SKATE Program, Freeman Elem., Houston (2 sessions)
- 25-28 AMECO Conference

November

- 1 SKATE Program, Girl Scout Service Unit, Erhardt Elem., Spring
- 13 Choices Program, Summit H.S., Pasadena
- 16 SKATE Program, Sienna Crossing Elem., Missouri City

LRCF Educational Programs

SKATE (Safe Kids Are taught Early) is a 45 minute abduction prevention program for children K – 6th grades. It is presented in a fun-filled manner that teaches lures used on children and some escape tactics.

Choices is our teen program. It is a 45–50 minute program designed to increase student awareness of decisions made in an instant and the lifelong consequences. It deals with violence in a dating relationship, alcohol abuse, sexual assaults, running away, and hazards on the Internet.

The Shadow is a program currently under development for children from 3rd – 6th grades and will teach lures, quick response actions, and some CSI and observation tactics to help increase children's awareness of their surroundings.

September Report

#Programs:

Skate	5
Safety Fairs	3

#Participants

Children	1210
Adults	28

#Searches

1

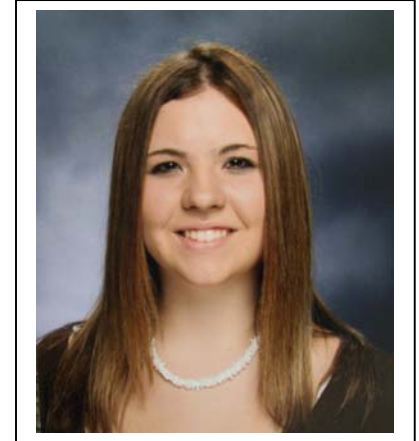
#New Cases

11

#Cases Resolved

11

MISSING YOUTH Newport, Arkansas



Jessica Nichole Adams, age 17, has been missing since August 10, 2007. She had been talking with someone on the Internet and left home to meet with this person. She has not been heard from since she left home. If you have any information, please call the Newport Police Dept. at 870-523-2723 or the Laura Recovery Center at 281-482-5723 or toll free at 866-898-5723.

Police Training for Citizens

Laura Recovery Center and the Galveston County Sheriff's Dept. partnered to offer citizens police training in Friendswood. The purpose of the training is to increase awareness of the different aspects of a sheriff's role in law enforcement in Galveston County. All those in attendance thoroughly enjoyed the first training class on Sept. 25. Classes are held every Tuesday night at Friends Church in Friendswood from now through Dec. 11. More classes will be held during the year at different locations throughout Galveston County.

LRCF Staff:

Bob Walcutt, Director
Dawn Davis, Senior Case Manager
Suzanne Slavin, Community Education

LRCF Board Members:

Bob Smither
Gay Smither
David Dannemiller
Carlos Canseco
Jo LaBrecque French

Donations are gratefully accepted online.